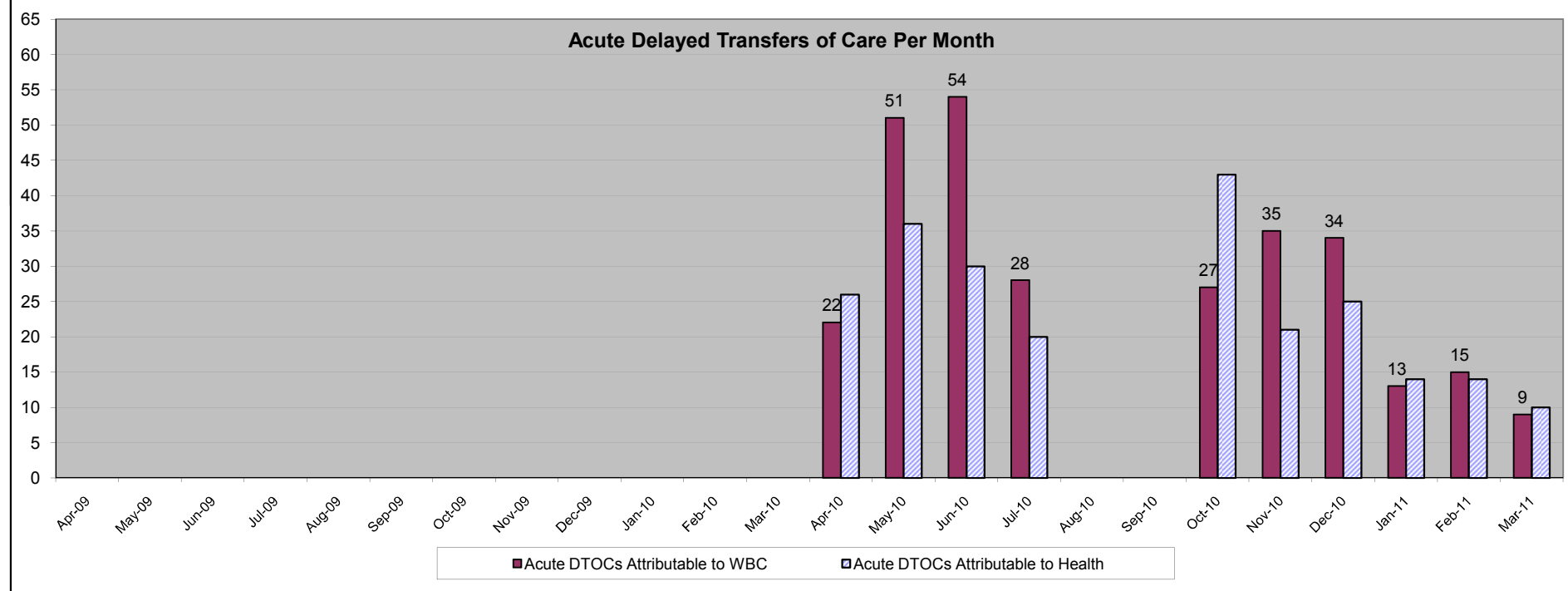


OUTCOME 1: Improved Health & Well-Being

Delayed Transfers of Care: Monthly

up to week 10 Q4 March 2011

	####	####	####	####	####	####	####	####	####	####	####	####	####	####	Jun-10	Jul-10	Aug-10	Sep-10	Oct-10	Nov-10	Dec-10	Jan-11	Feb-11	Mar-11		
Acute, of which															48	87	84	48	N/A	N/A	70	56	59	27	29	19
Attrib To WBC															22	51	54	28			27	35	34	13	15	9
Attrib To Health															26	36	30	20			43	21	25	14	14	10
Non-Acute															50	76	51	82	N/A	N/A	9	25	60	59	51	30
Total DTOCs	0	0	0	0	0	0	0	0	0	0	0	0	0	98	163	135	130	N/A	N/A	79	81	119	86	80	49	



Comments: Measures the impact of hospital services and community-based care in facilitating timely and appropriate discharge from all hospitals for all adults. This is an indicator of the effectiveness of the interface between health and social care. Monthly reporting of DTOCs on SITREPs via Unify2 was introduced in August 2010 and this meant we do not have any data for August to September. Local monitoring started in October 2010 with RBH delays only but all hospital delays are reported from November 2010. WBC is fined for acute DTOCs attributable to WBC and only acute DTOCs are shown above.